

Andy Warhol

FACTORY MADE

NEW YORK, NY (FEBRUARY 20, 2025) - FOR IMMEDIATE RELEASE:

This March, **TAGLIALATELLA GALLERIES** presents *Andy Warhol: Factory Made*, an exhibition of artwork representing three decades of iconic pieces from America’s most bought and sold artist in history, Andy Warhol.



“THE IDEA IS NOT TO LIVE FOREVER, IT IS TO CREATE SOMETHING THAT WILL.” -ANDY WARHOL

Perhaps no formal introduction is needed for Andy Warhol, known by most for his pop art style and his ability to transform numerous everyday objects and recognizable faces into his muses. His subjects ranged from household products like Brillo boxes and Campbell’s Soup cans to musicians, athletes, politicians, and other influential pop culture and historical figures.

**EXHIBITION.....ANDY WARHOL: FACTORY MADE
OPENING.....MARCH 6, 2025
LOCATION.....TAGLIALATELLA GALLERIES
ADDRESS.....229 10TH AVENUE, NEW YORK, NY 10011
RECEPTION.....6-8 PM**

In a studio he called “The Factory”, Warhol mastered the ability to walk the fine line between artistic creation and manufactured aesthetics with a commercial and business-like attitude toward the works he produced.

Between 1963 and his untimely death in 1987, Warhol moved his physical studio space several times, but The Factory continued to pump out a body of work unparalleled both then and since. It is estimated that Warhol created over 10,000 paintings, and his catalog raisonné of prints cites 413 published works in varying sized limited editions, totaling six

figures of artwork produced in that 25-year span. In retrospect, this unprecedented style of creation is even more impressive, since Warhol’s work was made before digital printing and computer-generation existed. As Warhol curated exhibitions and collaborated with fashion designers throughout the ’80s, he also produced countless hours of artistic films and shot hundreds of thousands of photographs.

With *Andy Warhol: Factory Made*, Tagliatella will feature the most iconic and sought-after of Warhol’s editions from The Factory’s three decades. Guests will have the opportunity

to view and purchase some of his most commercially traded and valuable works from this legendary period. For those more interested in the man himself, visitors can also view relics of Warhol’s eccentric style, including his iconic silver wig and a pair of his sunglasses.

The exhibition will begin the evening of **Thursday, March 6th** at Tagliatella Galleries in NYC, with an opening reception from **6–8 PM**. *Factory Made* will then travel to Toronto and continue at Tagliatella Galleries’ **99 Yorkville Ave.** location, opening **April 10th, 2025**. For additional exhibition details, please send an e-mail to info@djtf.com.



Ads: Apple (FS II.359), 1985
Screenprint on Lenox Museum Board
38 x 38 in. (96.5 x 96.5 cm)
Edition of 190
Signed and numbered in pencil on lower right



Ads: Chanel (FS II.354), 1985
Screenprint on Lenox Museum Board
38 x 38 in. (96.5 x 96.5 cm)
Edition of 190
Signed and numbered in pencil on lower left



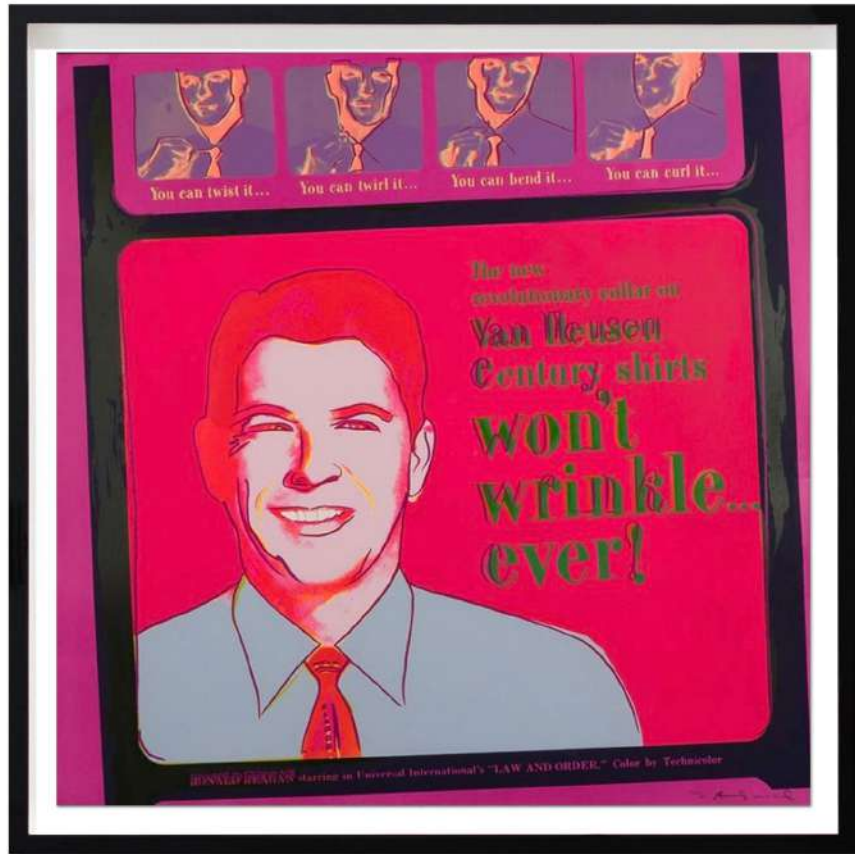
Ads: Life Savers (FS II.353), 1985
Screenprint on Lenox Museum Board
38 x 38 in. (96.5 x 96.5 cm)
Edition of 190
Signed and numbered in pencil on lower left



Ads: Mobil (FS II.350), 1985
Screenprint on Lenox Museum Board
38 x 38 in. (96.5 x 96.5 cm)
Edition of 190
Signed and numbered in pencil on lower left



Ads: The New Spirit (Donald Duck) (FS II.357), 1985
Screenprint on Lenox Museum Board
38 x 38 in. (96.5 x 96.5 cm)
Edition of 190
Signed and numbered in pencil on lower left



Ads: Van Heusen (FS IIB.356), 1985
Screenprint on Lenox Museum Board
38 x 38 in. (96.5 x 96.5 cm)
Edition of 30 TP | Each is unique
Signed and numbered in pencil on lower right



Ads: Volkswagen (FS II.358), 1985
Screenprint on Lenox Museum Board
38 x 38 in. (96.5 x 96.5 cm)
Edition of 30 TP | Each is unique
Signed and numbered in pencil on lower right



Art (Positive and Negative), ca. 1985–86
Acrylic and silkscreen ink on canvas diptych
16 x 20 in. (40.6 x 50.8 cm) each
Stamped, authenticated, and numbered on verso
by The Estate of Andy Warhol
Each is unique



Brooklyn Bridge (FS II.290), 1983
Screenprint on Lenox Museum Board
39 1/4 x 39 1/4 in. (99.7 x 99.7 cm)
Edition of 200

Signed vertically in pencil and numbered in pencil lower left
Published to commemorate the 100th anniversary
of the Brooklyn Bridge



Camouflage (FS II.409), 1987

Screenprint on Lenox Museum Board

38 x 38 in. (96.5 x 96.5 cm)

Edition of 80

Signed and numbered in pencil on verso by the executor of The Estate
of Andy Warhol on a stamped certificate of authenticity

SOLD

Andy Warhol
FACTORY MADE



Campbell's Soup I Portfolio (FS II.44-53), 1968

Screenprints on paper

35 x 23 in. (88.9 x 58.4 cm) each

Edition of 250

Signed in ball-point pen and numbered with a rubber stamp on verso



Campbell's Soup I: Tomato (FS II.46), 1968

Screenprint on paper

35 x 23 in. (88.9 x 58.4 cm)

Edition of 250

Signed in ball-point pen and numbered with a rubber stamp on verso



Cowboys and Indians - Indian Head Nickel (FS: IIB. 385), 2024
Screenprint on Lenox Museum Board
36 x 36 in. (91.4 x 91.4 cm)
Edition of 36 TP | Each is unique
Signed and numbered in pencil on lower left

SOLD

Andy Warhol
FACTORY MADE



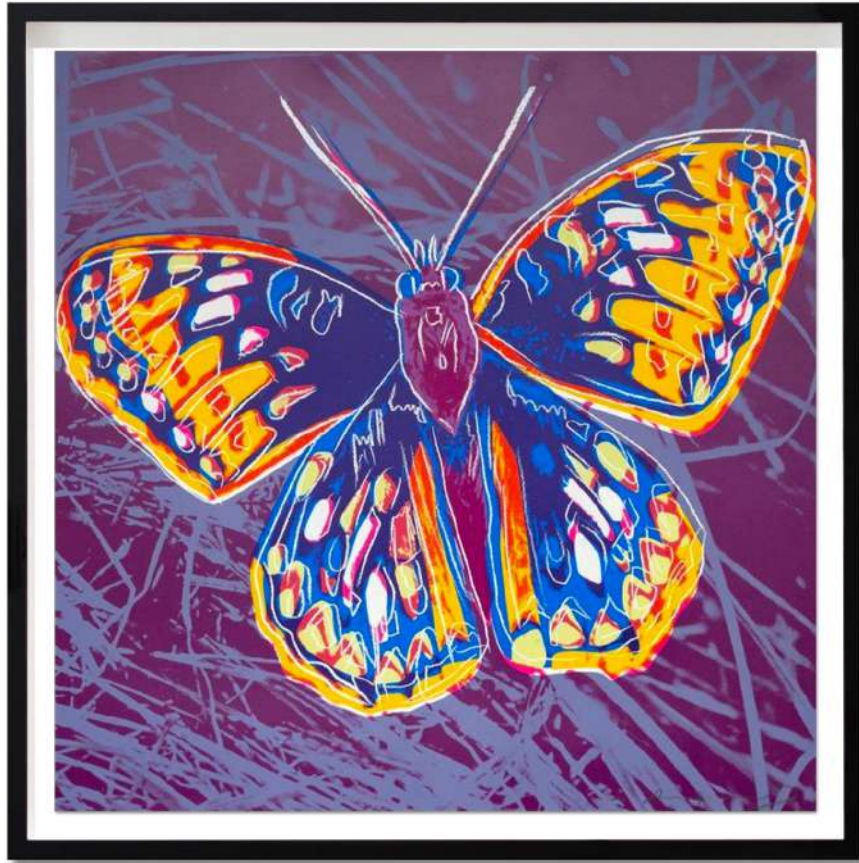
Cowboys and Indians: Mother and Child (FS II.383), 1986
Screenprint on Lenox Museum Board
36 x 36 in. (91.4 x 91.4 cm)
Edition of 250
Signed and numbered in pencil on lower left



Endangered Species: Pine Barrens Tree Frog (FS 294), 1983
Screenprint on Lenox Museum Board
38 x 38 in. (96.5 x 96.5 cm)
Edition of 150
Signed and numbered in pencil on lower left



Endangered Species: Pine Barrens Tree Frog (FS IIB.294), 1983
Screenprint on Lenox Museum Board
38 x 38 in. (96.5 x 96.5 cm)
Edition of 30 TP | Each is unique
Signed and numbered in pencil on lower left



Endangered Species: San Francisco Silverspot (FS II. 298), 1983
Screenprint on Lenox Museum Board
38 x 38 in. (96.5 x 96.5 cm)
Edition of 150
Signed and numbered in pencil on lower right



Endangered Species: Siberian Tiger (FS IIB.297), 1983
Screenprint on Lenox Museum Board
38 x 38 in. (96.5 x 96.5 cm)
Edition of 30 TP | Each is unique
Signed and numbered in pencil on lower left



Flowers (FS II.68), 1970

Screenprint on paper

36 x 36 in. (91.4 x 91.4 cm)

Edition of 250

Signed in ball-point pen and numbered with a rubber stamp on verso;
some dated

Andy Warhol
FACTORY MADE



Flowers (FS II.70), 1970

Screenprint on paper

36 x 36 in. (91.4 x 91.4 cm)

Edition of 250

Signed in ball-point pen and numbered with a rubber stamp on verso;
some dated

Andy Warhol
FACTORY MADE



Flowers (FS II.73), 1970

Screenprint on paper

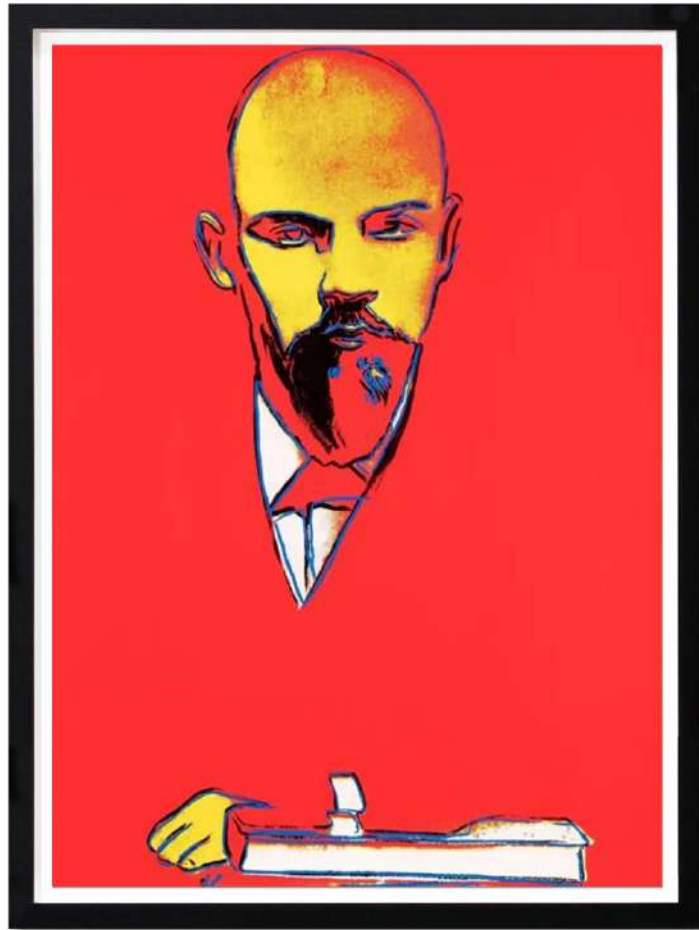
36 x 36 in. (91.4 x 91.4 cm)

Edition of 250

Signed in ball-point pen and numbered with a rubber stamp on verso;
some dated



Lenin (FS II.402), 1987
Screenprint on Arches 88 paper
39 3/8 x 29 1/2 in. (100 x 74.9 cm)
Edition of 120
Signed and numbered in pencil on lower left



Red Lenin (FS II.403), 1987
Screenprint on Arches 88 paper
39 3/8 x 29 1/2 in. (100 x 74.9 cm)
Edition of 120

Numbered in pencil and signed in pencil on verso by the executor of The Estate of Andy Warhol on a stamped certificate of authenticity



Mao (FS II.95), 1972

Screenprint on Beckett High White paper

36 x 36 in. (91.4 x 91.4 cm)

Edition of 250

Signed in ball-point pen and numbered with a rubber stamp on verso



Mao (FS II.99), 1972

Screenprint on Beckett High White paper

36 x 36 in. (91.4 x 91.4 cm)

Edition of 250

Signed in ball-point pen and numbered with a rubber stamp on verso



Marilyn Monroe (FS II.23), 1967

Screenprint on paper

36 x 36 in. (91.4 x 91.4 cm)

Edition of 250

Signed in pencil and numbered with a rubber stamp on verso;
some signed in ball-point pen; some initialed on verso; some dated

Andy Warhol
FACTORY MADE



Marilyn Monroe (FS II.24), 1967

Screenprint on paper

36 x 36 in. (91.4 x 91.4 cm)

Edition of 250

Signed in pencil and numbered with a rubber stamp on verso;
some signed in ball-point pen; some initialed on verso; some dated

Andy Warhol
FACTORY MADE



Marilyn Monroe (FS II.28), 1967

Screenprint on paper

36 x 36 in. (91.4 x 91.4 cm)

Edition of 250

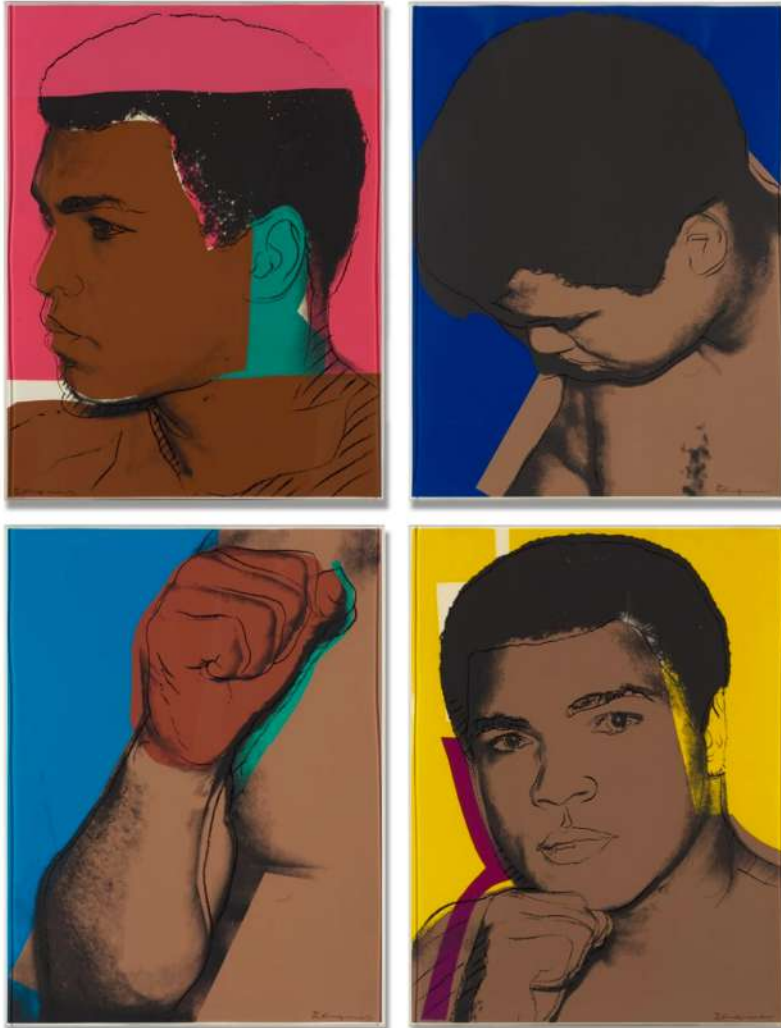
Signed in pencil and numbered with a rubber stamp on verso;
some signed in ball-point pen; some initialed on verso; some dated

Andy Warhol
FACTORY MADE



Moonwalk (FS IIB.404-405), 1987
Screenprint on Lenox Museum Board
38 x 38 in. (96.5 x 96.5 cm)
Edition of 66 TP | Each is unique

Signed with a printed signature and numbered in pencil on lower right;
Signed and numbered in pencil on verso by the executor of The Estate
of Andy Warhol, the publisher, and the printer on a stamped COA



Muhammad Ali (FS II.179-182), 1978

Portfolio of four screenprints on Strathmore Bristol paper
40 x 30 in. (101.6 x 76.2 cm) each

Edition of 150

Signed and numbered in felt pen on lower right,
except FS II.179 on lower left



Myths: Mickey Mouse (FS II.265), 1981
Screenprint on Lenox Museum Board with Diamond Dust
38 x 38 in. (96.5 x 96.5 cm)
Edition of 200
Signed and numbered on lower left



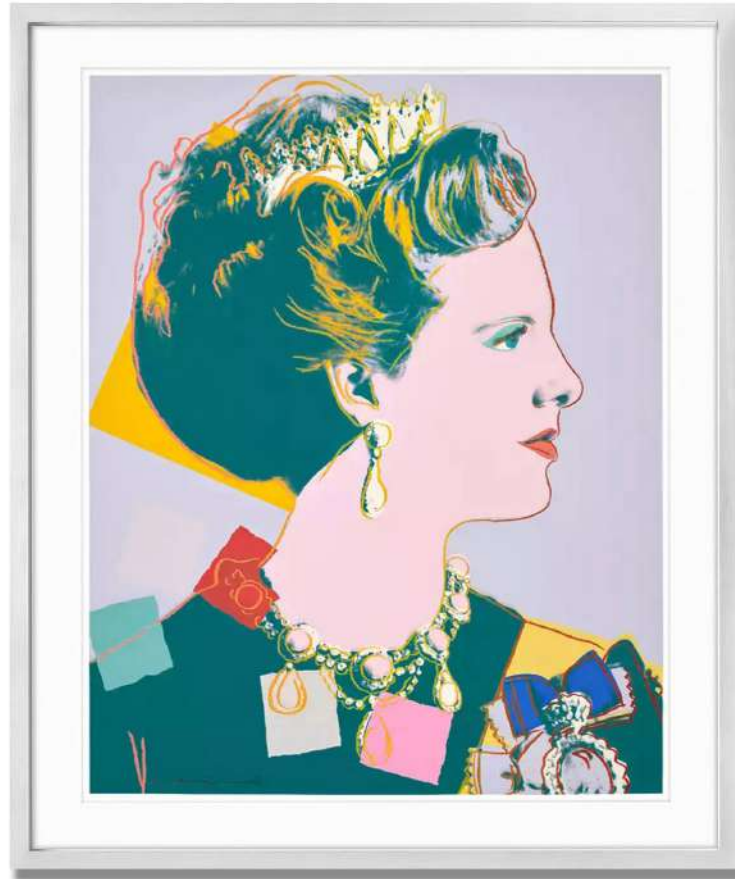
Myths: Superman (FS II.260), 1981
Screenprint on Lenox Museum Board with Diamond Dust
38 x 38 in. (96.5 x 96.5 cm)
Edition of 200
Signed and numbered in pencil on lower right



Myths: Uncle Sam (FS II.259), 1981
Screenprint on Lenox Museum Board with Diamond Dust
38 x 38 in. (96.5 x 96.5 cm)
Edition of 200
Signed and numbered in pencil on lower right



*Reigning Queens: Queen Elizabeth II
of the United Kingdom (FS II.336), 1985*
Screenprint on Lenox Museum Board
39 3/8 x 31 1/2 in. (100 x 80 cm)
Edition of 40
Signed and numbered in pencil on lower right



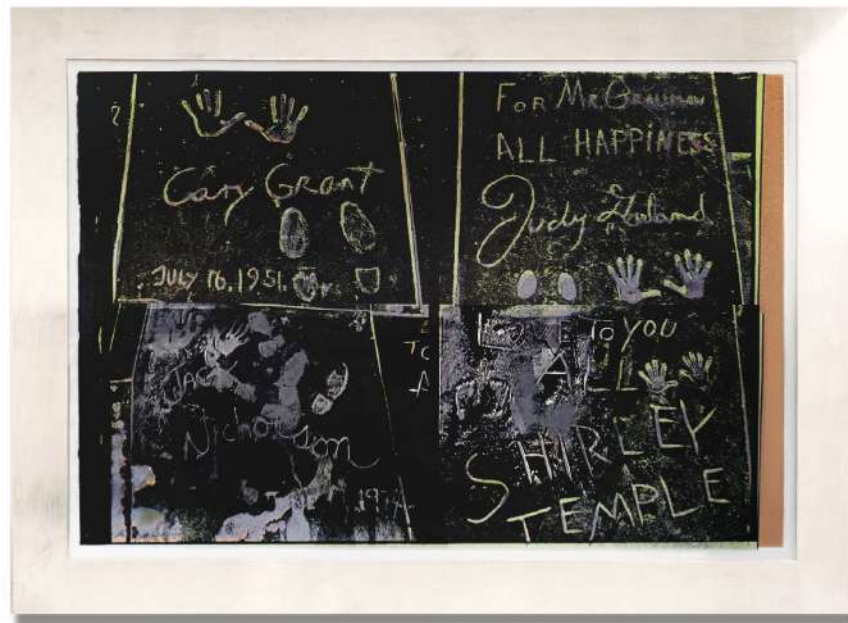
Reigning Queens: Queen Margrethe II of Denmark (FS II.342), 1985
Screenprint on Lenox Museum Board
39 3/8 x 31 1/2 in. (100 x 80 cm)
Edition of 40
Signed and numbered in pencil on lower left



Reigning Queens: Queen Ntombi Twala Of Swaziland (FS II.347), 1985
Screenprint on Lenox Museum Board
39 3/8 x 31 1/2 in. (100 x 80 cm)
Edition of 40
Signed and numbered in pencil on lower left



Shadows III (FS IIA.216–221), 1979
Screenprint with diamond dust on Arches 88 paper
30 1/2 x 43 in. (77.5 x 109.2 cm)
Unpublished trial proof numbered PT 087+ UT.001
Unique
Stamped on recto
Authenticated by THE ANDY WARHOL FOUNDATION
FOR THE VISUAL ARTS, INC.



Sidewalk (FS IIB.304), 1983
Screenprint on Dutch Etching paper
30 x 44 1/2 in. (76.2 x 113 cm)
Edition of 45 TP | Each is unique
Signed and numbered in pencil on lower left



Wayne Gretzky #99 (FS II.306), 1984
Screenprint on Lenox Museum Board
40 x 32 in. (101.6 x 81.3 cm)
Edition of 300

Signed and numbered in pencil on lower left by Andy Warhol
Signed by Wayne Gretzky



Ingrid Bergman With Hat (FS II.315), 1983
Screenprint on Lenox Museum Board
38 x 38 in. (96.5 x 96.5 cm)
Edition of 250
Signed and numbered in pencil on lower right

Andy Warhol

FACTORY MADE

